

Before calling service

Automatic Ice Maker does not work

- Allow your refrigerator to operate and cool down for 24 hours (1 full day) before the ice maker starts producing ice.
- To fill the ice bucket to maximum capacity, dispense a few cubes 8 and 16 hours after installation.
- If **ICE OFF** is lit, the ice maker will not make ice.
- To activate the ice maker, press the **ICE OFF** button on the control panel so it is no longer lit.
- If you have the model **RF268, RFG238 or RFG298**, the figure may differ slightly from your refrigerator. For details, refer to the "Using the Control Panel" section of the User Manual.



Slow Ice cube freezing

- Check if the ice bucket is completely inserted.
- Freezer temp may not be enough; set it to -2°F or lower.



Small or bubbled ice cubes or Slow water dispensing

- If the water filter is clogged, small or bubbled ice cubes may be produced.
- Replace the water filter cartridge with a new one.

Water filter replacement

- Slowly turn the water filter 90° clockwise so it is aligned with the printing mark on the cover, locking the filter in position. Make sure to align the water filter label mark with center of cover filter printing as illustrated.



After installation or when replacing the water filter, dispense at least a gallon (2-3minutes) of water to remove trapped air from the water line. Otherwise, water may drip after dispensing water.

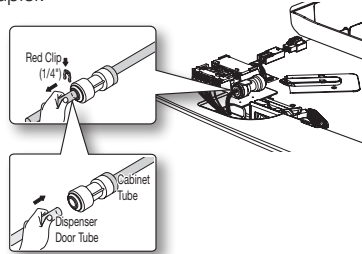


Water is not cool enough

- The first glass of water may not be cold enough because the stored water in the water valve has not cooled completely. Dispense several glasses of water and then it would be cool.

Water dispenser dripping

- If the water line is not inserted into the coupler properly, air could penetrate into the water line causing water dripping from the water dispenser.
- **CAUTION** : Insert the water line into the coupler completely and slide in the clip at the end of the coupler.



Refrigerator or freezer Compartments are warm

- Allow your refrigerator to operate and cool down for 24 hours (1 full day) to reach to the set temperature.
- Also, when you put room temperature or warmer food into your refrigerator, it may need an additional 24 hours for the fridge to reach the set temperature.

Moisture forms on outside/inside of refrigerator

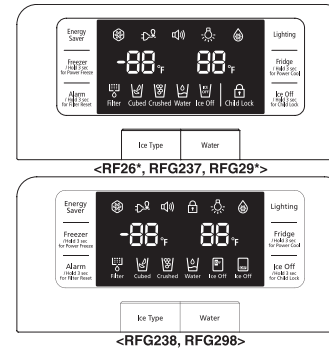
- Wipe off the condensation with a dry towel (This may occur during hot and humid seasons.)
- If the condensation occurs on the doors, turn off the Energy Saving function.
- If you open the doors frequently or for too long, it may cause moisture inside the fridge.

Noise Clicks, Pops, Cracks, Snaps

- These noises may be heard occasionally inside the refrigerator. This is normal. This sound occurs when various items contract or expand while temperatures are changing; especially during defrosting. This may also occur when electronic devices including the ice maker are operating.

Display

If you have **RF265, RF266F, RF268 or RFG299**, the figure may differ slightly from your Refrigerator. For details, refer to the user manual "Using the control panel"



- Recommended Temp Settings : -2°F for freezer and 38°F for refrigerator.
- Filter indicator : The filter Indicator will be Red when you have used your water filter for 6 months, Reset the indicator (it will be Blue) after replacing the filter by holding the "Alarm/Hold 3 sec for Filter Reset" button for 3 seconds.
- Ice off : Press the "Ice Off" button to turn the ice making function off.
- Cooling Off (Show Room) mode : If the Display shows the "OF OF" code, it means that the Cooling Off function is activated and the refrigerator is not cooling. To cancel the Cooling Off mode, hold the **Energy Saver + Freezer** buttons together for 3 seconds.



Cool Select Pantry (on some models)



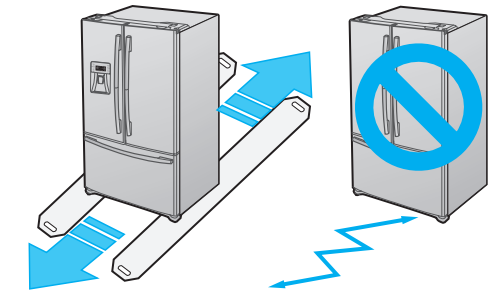
- You can select your Pantry temperature from among the following.
Fresh(38°F[3°C])
Chilled(34°F[0°C])
Deli(41°F[5°C]) modes.

Food stored in refrigerator is frozen

- If food with too much moisture is stored near the cooling vents, it may get frozen. Be sure to keep moist food away from the cooling vents.

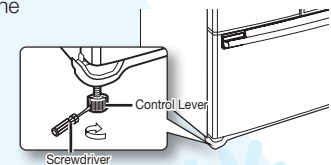
Moving and Installing

- When installing, servicing or cleaning behind the refrigerator, be sure of the following:
- To protect your floor's finish when moving the refrigerator, cut a large section of the cardboard carton and place under the refrigerator where you are working.
- Pull the unit straight out and push back in straight after finishing.

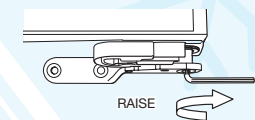


Leveling & Door Alignment

- Insert a flat-blade screwdriver into a slot on the control lever, turn it clockwise or counter-clockwise to level the door.



- Open the freezer drawer to gain an access to the adjustable hinge pin. Next, adjust the refrigerator door using the provided 0.16 inch wrench.



- If you need to add more height to the door, insert the provided snap rings.

