

L-Series & S-Series Chimney Caps



LCL

SCL and LCL
Round Chimney Cap
with Telescope



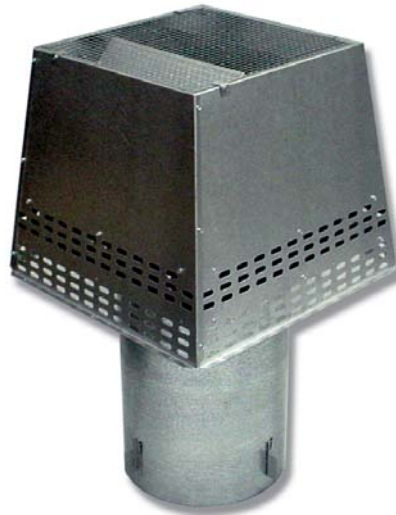
LFSQT

Black Architectural Shroud
Termination



SQ8

Black Square
Architectural
Cap



SPC and LPC

Pyramid Shroud Termination



CF8 and CF11

Terra Cotta Chimney Cap



SCL



SC



LC

SC and LC
Round Chimney Cap
with Storm Collar



MONESSEN
HEARTH SYSTEMS

SPECIFICATIONS

Product Specifications							
Model	Chimney Pipe		Pipe Diameter		Chimney Cap Dimensions	Flashing Kit (VFK)	Design Certified
	"L" Series	"S" Series	Flue	Outer Pipe			
SC		X	8"	11"	18-1/2" (Dia.) x 14-1/4" H	N/A	UL
LC	X		11"	13"	18-1/2" (Dia.) x 15-1/4" H	N/A	UL
SPC		X	8"	11"	20-1/2" (Bot.) W x 16" (Top) W x 17-1/4" H	Not Required	UL
LPC	X		11"	13"	20-1/2" (Bot.) W x 16" (Top) W x 17-1/4" H	Not Required	UL
CF8		X	8"	11"	18" (Bot.) W x 20" (Top) W x 18-5/8" H	Required	UL
CF11	X		11"	13"	18" (Bot.) W x 20" (Top) W x 18-5/8" H	Required	UL
SCL		X	8"	11"	18-1/2" (Dia.) x 24-3/4" H (w/telescope)	Not Required**	UL
LCL	X		11"	13"	18-1/2" (Dia.) x 33-1/4" H (w/telescope)	Not Required**	UL
SQ8		X	8"	11"	21-1/4" (Dia.) x 13" H	Required	UL
LFSQT	X	X	8" or 11"*	11" or 13"*	24" (Bot.) W x 21" (Top) W x 19-11/16" H	Required	UL

* May be used with "L" or "S" Series Pipe. Requires Telescope Assembly S8 or TL.

** VFK required only when using field constructed shroud.

Product Usage										
	SC	LC	SPC	LPC	CF8	CF11	SCL	LCL	SQ8	LFSQT
BWB400A(I)/BWB400CA(I)	X		X		X		X		X	X
BWB500A(I)/BWB500CA(I)	X		X		X		X		X	X
SWB400I	X		X		X		X		X	X
SWB500I	X		X		X		X		X	X
HWB600(HB)		X		X		X		X		X
HWB700(HB)		X		X		X		X		X
HWB800		X		X		X		X		X
624WBSTB		X		X		X		X		X
624WBPF		X		X		X		X		X
624WBCL/624WBCL		X		X		X		X		X
HWB700OD		X		X		X		X		X

MONESSEN HEARTH SYSTEMS

149 Cleveland Drive • Paris, Kentucky 40361

www.monessenhearth.com

To avoid personal injury or property damage, the product described by this brochure must be installed, operated and maintained in strict compliance with the instructions packaged with the product and all applicable building or fire codes. Contact local building or fire officials about restrictions and installation inspection requirements. All photographs and drawings on this brochure are for illustrative purposes only and are not intended for, nor should they be used as a substitute for the instructions packaged with the unit. Appearance and specifications of the product are subject to change without notice.

© 2004 Monessen Hearth Systems, Inc.



MADE IN U.S.A.



ChimneyCaps-MHS6605

Sold by: